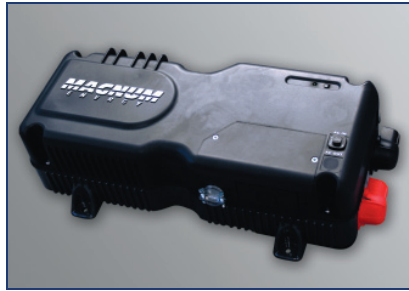




The MM Series Inverter/Charger



MODEL NUMBERS

- MM612 (Inverter only)
- MM1212

AVAILABLE FOR

- Marine Systems
- RV Systems

AVAILABLE ACCESSORIES

- DC Load Disconnect
- Fuse Blocks
- MagWeb
- Remote - ME-ARC
- Remote - ME-RC
- Remotes - MM-R & MM-RC



The Powerful Difference

Cost Effective Inverter/Chargers from Magnum Energy

The MM Series Inverter / Charger is a modified sine wave inverter providing a cost effective solution for those with smaller power needs in mobile applications. Versatile, easy-to-use, and lightweight, the MM Series provides a reliable base for your energy system.

Safe and reliable: The MM Series is ETL Listed to the stringent requirements of UL/cUL 458 and CSA C22.2 #107.1-01 for mobile use.

Attractive styling: The modern, hourglass case, paired with the die cast aluminum base combines form with function, creating an attractive unit that uses its base as a heat sink for superior high temperature operation.

Features:

Standard transfer relay:

The standard 20 amp transfer relay will pass AC power through the inverter when using grid or generator power.

Versatile mounting:

Mount the MM Series on a shelf, wall, or even upside down.

Fan cooled: The MM Series is fan cooled, enabling the unit to work well in confined spaces. If the inverter does exceed its temperature limits, it will automatically shut down and then restart when it cools down.

Low battery protection:

If your battery voltage goes below the cut-out setting the MM Series will automatically shut down, saving your batteries.

High battery protection:

If your battery voltage reaches over the cut-out setting the MM Series will shut down.

Current overload protection:

The MM Series will automatically shut down if its output wattage is exceeded or it detects a short in the wiring, saving the unit from costly damage.

Convenient switches:

The MM Series comes with an on/off front-mounted switch with an easy-to-read LED indicator.

Circuit breaker protection:

Every model comes with built in input and output circuit breakers for ease of installation.

Battery temp sensor:

The standard battery temp sensor monitors temperatures from 0 - 50° C.

Buy with ease:

The MM Series is backed by a two-year (24-month) parts and labor warranty.



MM Series Specifications

	MM612 (inverter only)	MM1212
Inverter Specifications		
Input battery voltage range	9 to 16 VDC	9 to 16 VDC
Nominal AC output voltage	120 VAC \pm 5%	120 VAC \pm 5%
Output frequency and accuracy	60 Hz \pm 0.1 Hz	60 Hz \pm 0.1 Hz
1 msec surge current (amps AC)	27	42
100 msec surge current (amps AC)	11	23
5 sec surge power (real watts)	1100	2100
10 sec surge power (real watts)	1050	1900
30 sec surge power (real watts)	1000	1750
5 min surge power (real watts)	950	1450
30 min surge power (real watts)	675	1375
Continuous power output at 25° C (with 1.0 PF)	600 VA	1200 VA
Continuous current output	5 AAC	10 AAC
Maximum continuous input current	80 ADC	160 ADC
Inverter efficiency (peak)	95%	95%
Transfer time	16 msec	16 msec
Search mode (ypical)	3 watts	5 watts
No load (120 VAC output, typical)	10 watts	18 watts
Waveform	Modified Sine Wave	Modified Sine Wave
Charger Specifications		
Continuous output at 25° C	NA	70 ADC
Charger efficiency	NA	88%
Power factor	NA	> 0.95
Input current at rated output (AC amps)	NA	9
General Features and Capabilities		
Transfer relay capability	20 AAC (input current for charging and pass through)	
Battery temperature compensation	Yes, on models with chargers: 15 ft Battery Temp Sensor standard	
Internal cooling	0 to 59 cfm variable speed	
Overcurrent protection	Yes, with two overlapping circuits	
Overtemperature protection	Yes on transformer and MOSFETS	
On/Off with status indicator	Yes, front mounted and easily accessible	
Low battery cutout	10 VDC, adjustable on most models with the ME-RC remote	
AC output and input	Hardwire	Hardwire
Output circuit breaker	7 A switchable	15 A
Input circuit breaker	8 AAC	20 AAC
Listings	ETL Listed to UL/cUL458, CSA C22.2 #107.1-01	
Warranty	Two years	
Environmental Specifications		
Operating temperature	-20° C to +60° C (-4° F to 140° F)	
Nonoperating temperature	-40° C to +70° C (-40° F to 158° F)	
Operating humidity	0 to 95% RH non condensing	
Physical Specifications		
Dimensions (l x w x h)	16.6" x 8.4" x 4.7" (42 cm x 21 cm x 12 cm)	
Mounting	Shelf (top or bottom up) or bulkhead (vents up)	
Weight	14 lb (6.4 kg)	20 lb (9 kg)
Shipping weight	16 lb (7.3 kg)	22 lb (10 kg)
Max operating altitude	15,000' (4570 m)	
Construction	ABS plastic top and cast aluminum bottom	

Magnum Energy, Inc.

2211 West Casino Road
Everett, Washington 98204 USA

The Powerful Difference

Phone: 425-353-8833
Fax: 425-353-8390
Web: www.magnumenergy.com

Testing for specifications at 25° C
Specifications subject to change without notice.

January 2012, Rev C

Part #64-0400

Authorized Magnum Dealer